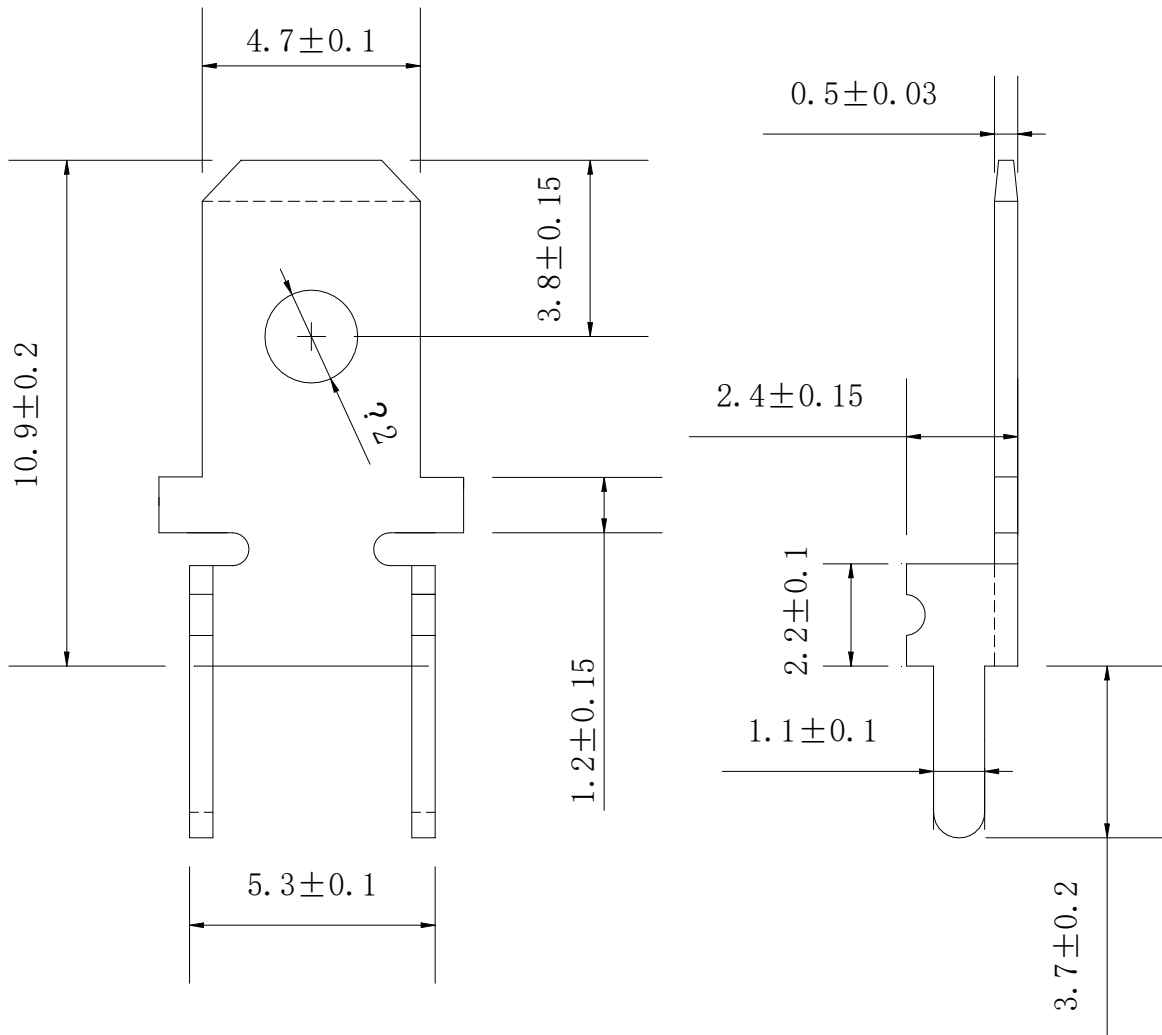


Features

The BT001-050A fuse terminal is made of copper with nickel plated surface. It is mainly used for connections in electrical circuits. This specification refers to models BT001-050A.

- Material: copper H62, semi-hard
- Thickness: 0.5mm
- Pb- and Halogen-free, RoHS compliant
- Smooth Surface, non-oxidizing
- Soldering temperature: 260±5°C
- Nickel plated or bright tin plated

Dimensions (unit in mm)



Ordering Information

Series	Part No.	Supplementary Code	Qty
BT001-050A			