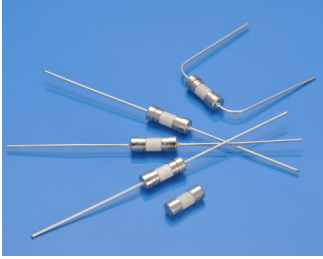


# 333 Subminiature Cartridge Fuse



## Main Characteristics

Subminiature Cartridge fuse; Fast-Acting (F) Standard

IEC-60127-3/III

### Materials

- Tube: Ceramic Tube
- End Caps: Nickel plated brass
- Axial Leads: Nickel plated caps
- Tin plated copper wires

### Operating Temperature

-55°C to +125°C

### Storage Conditions

- +10°C to +60°C
- Relative humidity: ≤75% yearly average
- Without dew, maximum 30 days at 95%

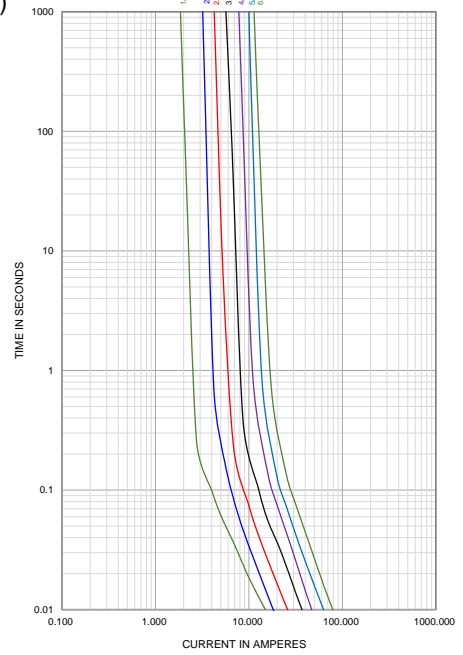
### Vibration Resistance

- 24 cycles at 15 min. each (60068-6)
- 10-60Hz at 0.75mm amplitude
- 60-2000Hz at 10g acceleration

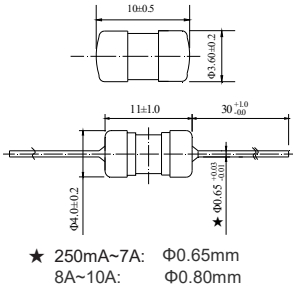
### Soldering Parameters

- 260°C. ≤5 sec (Wave Soldering)
- 350°C. ≤3 sec (Hand Soldering)
- Soldering Peak: 260°C. 10 sec. (IEC 60068-20)

Average Current Curve(I-T Curve)



Dimensions (unit in mm)



- ★ 250mA~7A: Φ0.65mm
- 8A~10A: Φ0.80mm

Time vs Current Characteristics: IEC-60127-3/III

Rated Current	150%	210%	275%	400%	1000%
250mA~10A	>1h	<30min	10ms~3s	3ms~300ms	≤20ms



## Electrical Characteristics at 25°C

Amp Code	Rated Current	Rated Voltage	Max Voltage Drop(mV)	Max. Power Dissipation (mW)	Typical Cold Resistance (mΩ)	Nominal Melting I²t(A²sec)	Breaking Capacity	Approvals		
								cULus	TUV	
0315	315mA	250V AC	400	331	201.0	0.152	50A @ 250V AC 50A @ 125V AC 35A or 10In/250V AC	●	○	
0750	750mA		310	630	133.9	0.941		●	○	
1100	1.00A		280	375	63.8	2.25		●	○	
1150	1.50A		250	1050	36.7	2.77		●	○	
1200	2.00A		240	1260	25.2	3.20		●	●	
1250	2.50A		200	1313	21.0	6.75		●	○	
1315	3.15A		180	1488	14.6	13.69		●	○	
1400	4.00A		160	1680	10.9	20.09		●	○	
1500	5.00A		150	1969	8.33	39.69		●	○	
1630	6.30A		150	1969	7.00	62.41		●	●	
1800	8.00A		150	1969	5.80	92.16		●	○	
2100	10.00A		150	1969	4.73	156.3		50A @ 250V AC 50A @ 125V AC	●	○

**Note:** (1) Permissible continuous operating current is ≤100% at ambient temperature of 23°C (73.4°F)  
 (2) The cULus certification by 125V and 250V; the others certification by 250V.

## Ordering Information

Series	Amp Code	Supplementary Code	Qty
333			



**Sales Contact**  
s1s01@beterfuse.com

**Technical Support**  
Kenny@betterfuse.com

National High-tech Enterprise  
 SC 32C National Technical Committee Member of China  
 Intertek ISO 9001 Certified Company  
 Intertek ISO 14001 Certified Company  
 Intertek QC 080000 Certified Company  
 NQA IATF 16949 Certified Company

国家高新技术企业  
 SC 32C 国内专家组成员单位  
 ISO 9001 认证企业  
 ISO 14001 认证企业  
 QC 080000 认证企业  
 IATF 16949 认证体系